

20 August 2018

### Kore Potash plc

("Kore Potash" or the "Company")

### Maiden Sylvinite Mineral Resource at Dougou Extension – Diagrams

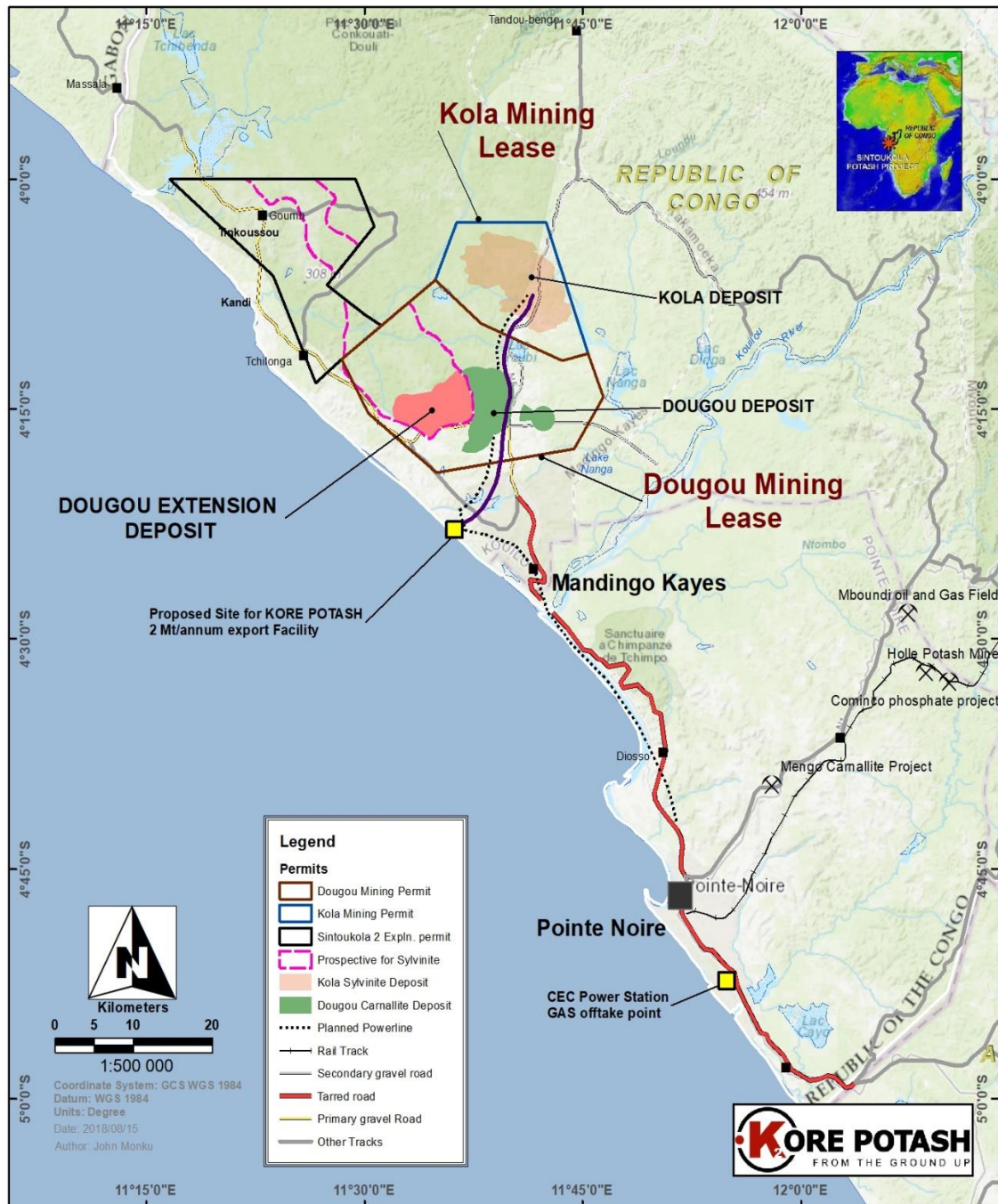
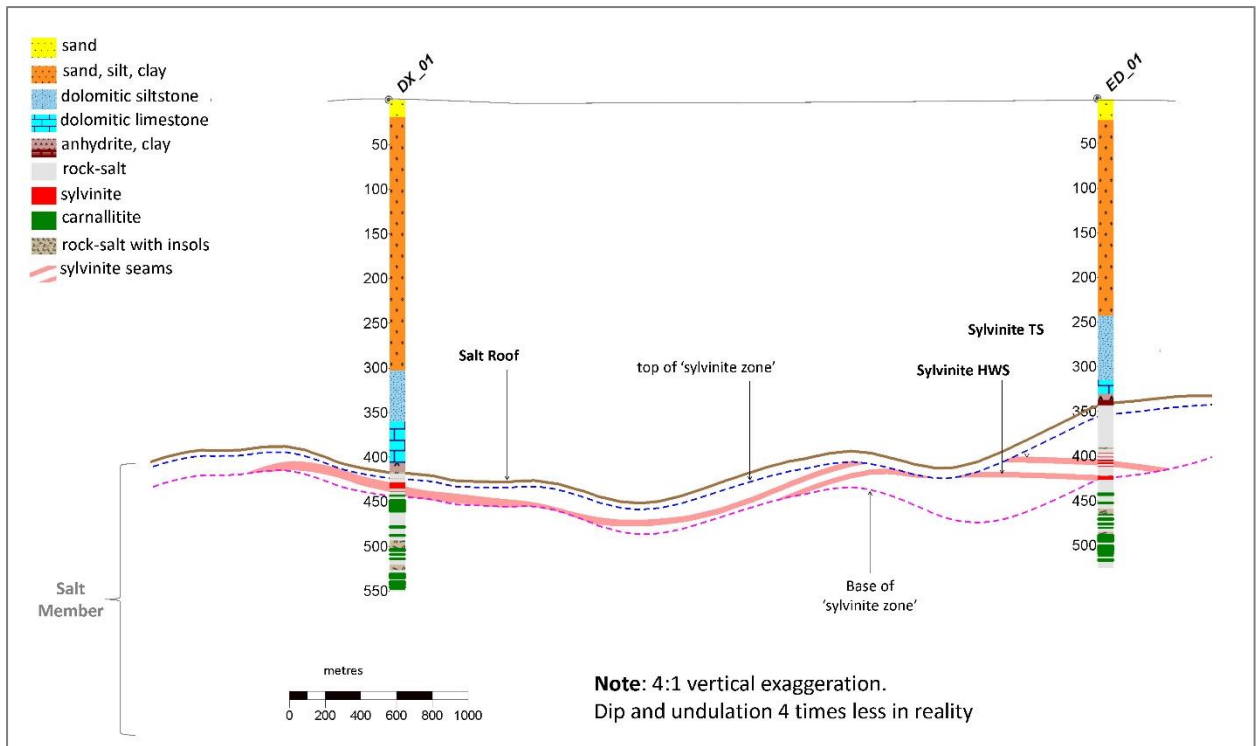
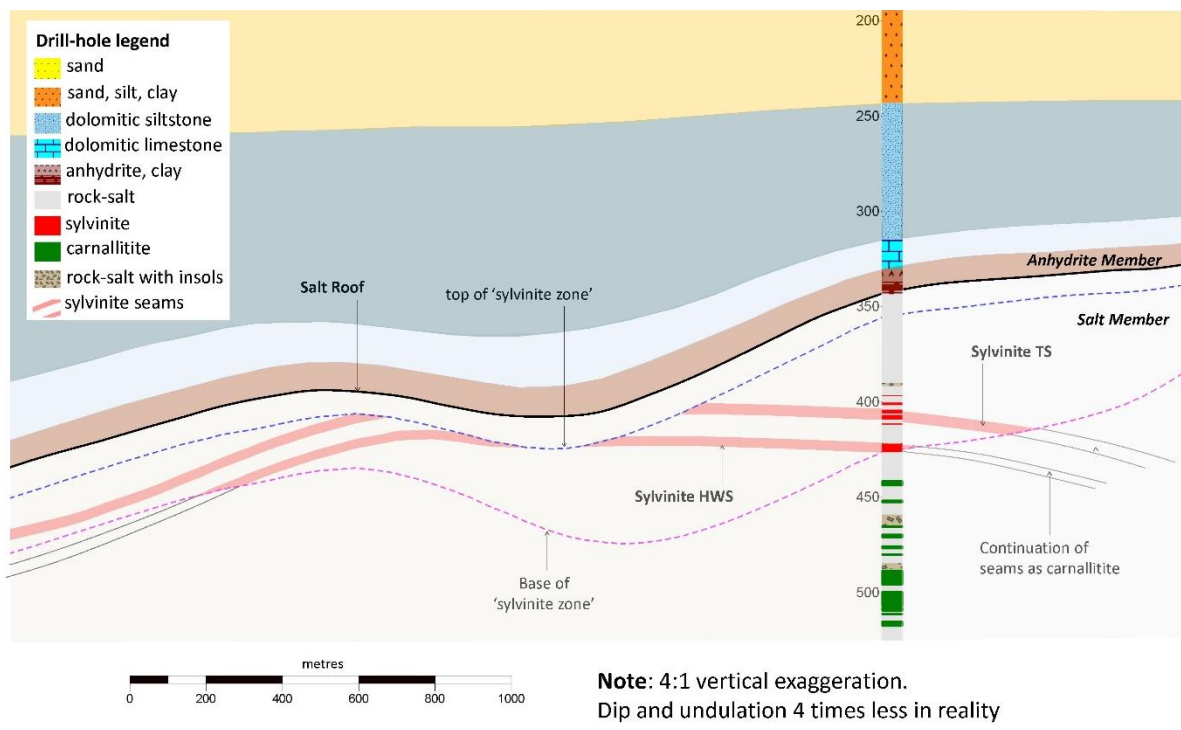


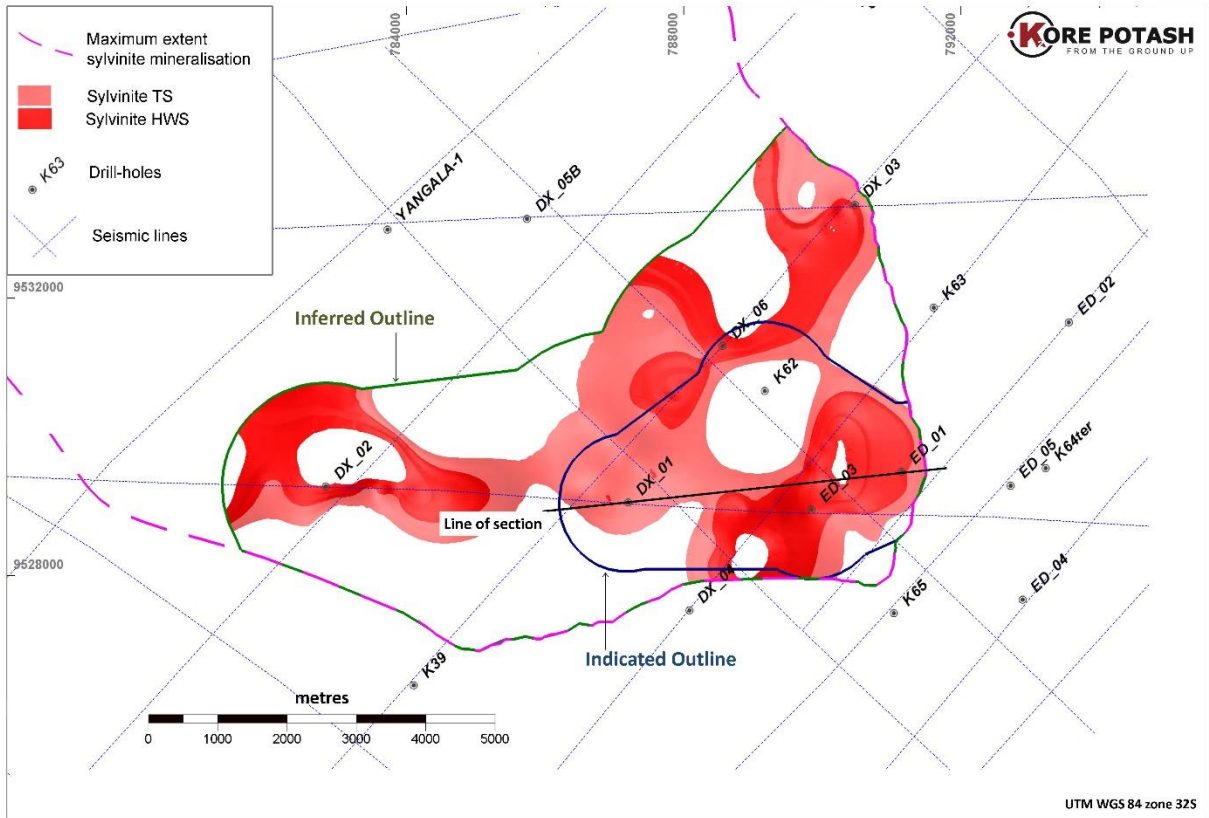
Figure 1. Dougou Extension Deposit location at the southern end of the prospective zone for sylvinite



**Figure 2. Cross-section through part of the Dougou Extension Deposit (looking north).**



**Figure 3. Close-up of part of figure 2 showing important aspects of the resource model in cross-section.**



**Figure 4. Top seam and Hangingwall Seam sylvinite in plan-view, and limits of the Indicated and Inferred Mineral Resources. Figure 2 provides the cross section along the “line of section”.**